

Photos of Crane Creek Trail
Malheur National Forest

June 25, 2011



The trailhead is found off Road 1663, where Crane Creek leaves Crane Prairie.



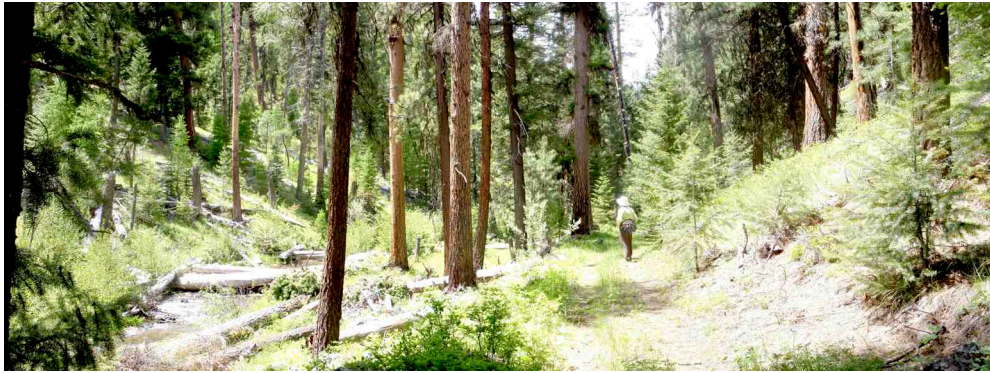
The trail starts out on an abandoned roadway, bulldozed over the historic wagon road.



After one mile, the trail follows the original wagon road downstream through this gate.



The streamside forests on the upper creek are a mix of lodgepole pine and larch.



Soon, old growth larch appear at streamside, mixed with ponderosa pine on the hillsides.



At some spots along the trail, old growth larch form pure stands.



Further downstream, old growth ponderosa groves are found along the wagon road.



A great spot for a destination picnic and rest on the banks of Crane Creek.