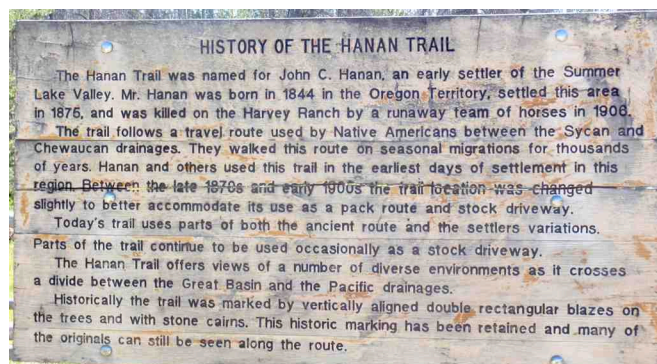


Photos of Hanan Trail
Fremont National Forest

July 28, 2011



The hike begins at the Sycan Trailhead Forest Camp, on the Upper Sycan River.



An interpretive sign explains the history of the trail.



The trail goes about a mile through stands of beetle-killed lodgepole pine...



...before reaching the first of the large wet meadows along the Upper Sycan River.



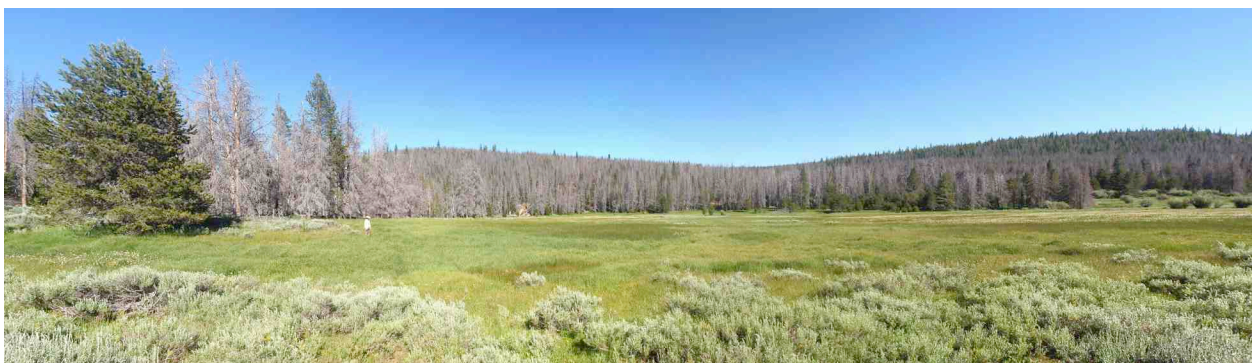
The trail is well-built, with log and rock footbridges over the side streams and seeps.



The long wet meadows (with abundant wildflowers in spring) are the main attractions along the trail.



Marking the trail throughout its length are double rectangular tree blazes.



The big meadows at either the one-mile or three-mile point are good destinations for a day hike.