



The western half of the Ochoco Forest has more rainfall, thicker forests—and many more visitors.



The eastern forests are mainly in the canyons, with grass and sage flats on the drier, rolling uplands.



Found here also are grass prairies, both immense meadows like Big Summit Prairie...



...and innumerable smaller “stringer meadows” along most streams and seeps.

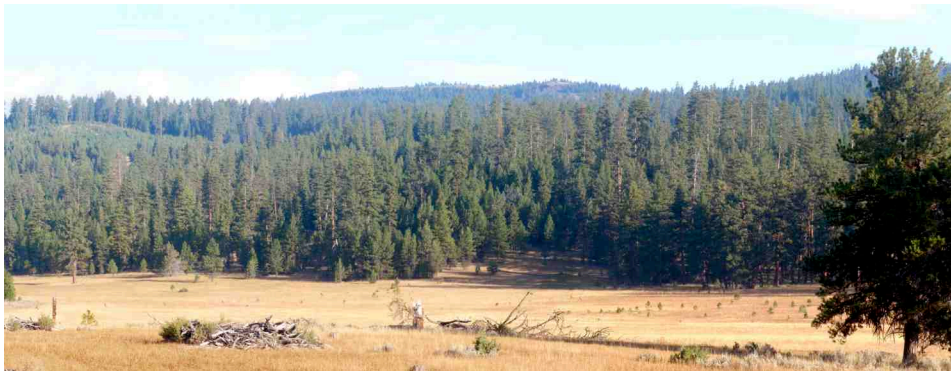




For the day hiker, less-visited destinations include the North Fork Crooked River...



...and the well-developed trail down into the Rock Creek canyon.



The crest of Lookout Mountain (from the south) also presents an enticing hike destination...



...and the long sweeping views are worth the walk to the mountain top.