

**Photos of La Grande Watershed Hike**  
Wallowa-Whitman National Forest, Baker District

August 22, 2011



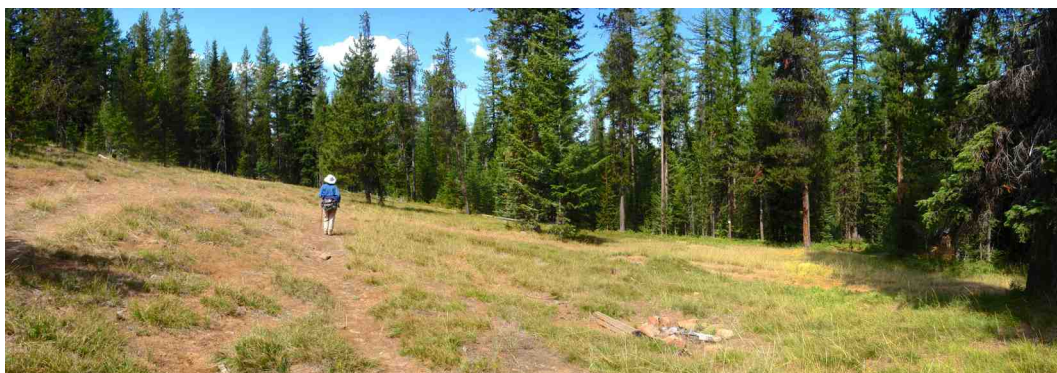
The La Grande Watershed (at right) is an unroaded, unlogged and ungrazed part of the north Elkhorns.



The hike starts on high-clearance Road 250, at its intersection with main Forest Road 43.



For the first mile, the route follows Road 250 along the ridge top, through mixed lodgepole and fir.



At 1.2 miles, the road ends at a large hunting camp, where the hiking trail to the rim begins.



The trail to the rim passes through alternating sections of thick, unlogged white fir...



...and open "balds" where sparse bunchgrass, wildflowers and forbs are the only ground cover.



At 3.1 miles, one arrives at the rim top, with views west over the reservoir and south to the high Elkhorns.



To the north are wide views down the Beaver Creek watershed toward the Grande Ronde River.