

Photos of McGraw Rim Hike
Hells Canyon National Recreation Area

June 26, 2014



The level rim of the McGraw Divide (at center) offers relatively easy hiking access to upper Hells Canyon.



The hike to the rim starts on an unsigned dirt jeep road branching southeast off Road 110.



One can follow this jeep road for a half mile to the rim, or just strike off cross-country to reach the top.



The first views from the rim are over bench lands within Hells Canyon to the Seven Devils range beyond.



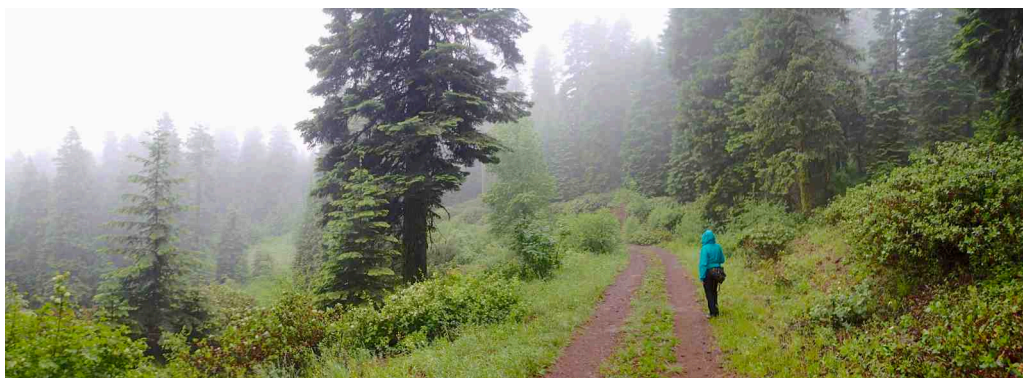
The best hiking route is south cross-country, along the edge of the trees — through wildflowers in Spring.



At times, the route passes through stands of big old-growth fir, just back from the rim's edge.



Near the end of the rim, on a clear day, are more sweeping vistas east over the Hells Canyon gorge.



The return hike to the car is along Road 110, through thick fir forests with a lush understory.