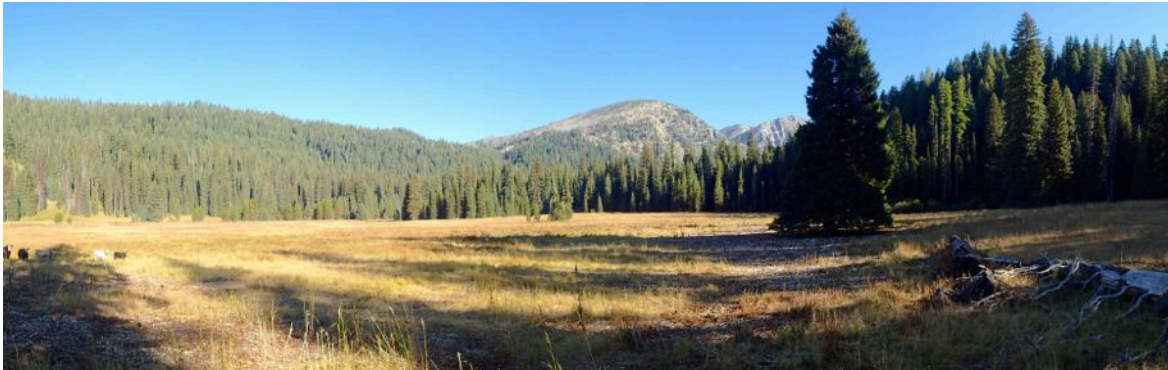


Photos of West Eagle Creek Trail
Wallowa-Whitman National Forest, La Grande District

September 11, 2014



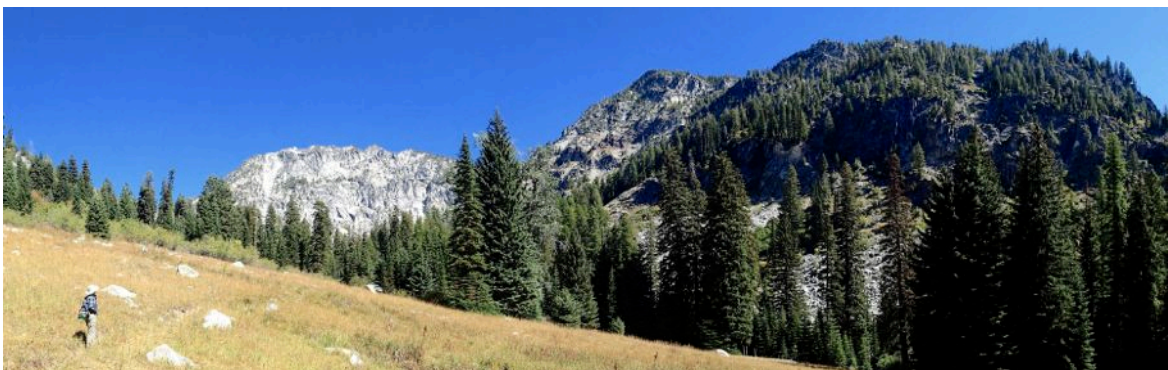
Near the start, the trail edges West Eagle Meadow, with the first views of the High Wallowa granite peaks.



At 1.2 miles, the trail fords West Eagle Creek — knee-deep in July and ankle-deep in September.



Past the creek ford, the trail climbs gradually through stands of enormous, old-growth grand fir trees.



Soon, open meadows within snow avalanche chutes give closer views of the nearly vertical granite cliffs.



At 2.6 miles, the trail makes a second ford of West Eagle Creek — and crossing logs are hard to find.



On switchbacks above the ford are views of the hanging valley and waterfall of East Fork West Eagle.



Past the turnoff to Echo Lake, the trail enters a wonderfully scenic, alpine valley that is seldom-visited.



Following old trails further up West Eagle Creek, one can find more spectacular vistas and waterfalls.