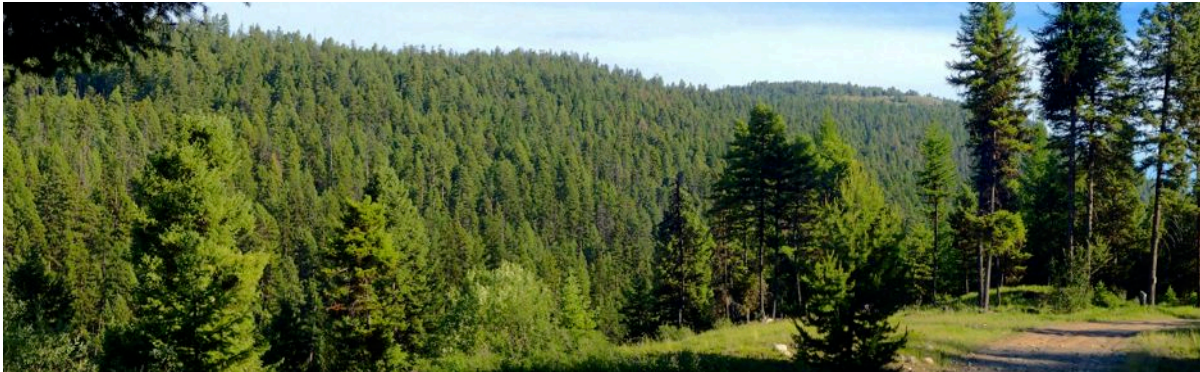


Photos of Maple Mountain Hike
Colville National Forest, Republic District

June 11, 2015



Maple Mountain (far right center) is the 5,300'-high, mostly bald summit of a forested, north-south ridge.



The trailhead is on Road 2086 (aka Sheridan Road), just beyond the cattle guard at the USFS boundary.



For the first half mile, the trail descends to marshy Granite Creek and crosses on a 50' footbridge.



For the next 1.5 miles, the trail climbs through a mixed larch and fir forest, with views of Storm King Mtn.



Once top of the ridge, the trail winds through stands of old-growth trees, with a grass understory.



At 2.3 miles, the route leaves the trail and climbs cross-county for a half mile up toward the summit.



From a bald knob just east of the summit, one has views north to Bodie Mountain (at far center)...



...plus long, panoramic vistas southeast to the crest of the Kettle River Range on the far horizon.