

**Photos of Rock Creek Coulee Hike**  
Spokane BLM District

May 7, 2013



The hike first crosses the Rock Creek bridge and passes through the abandoned Escure Ranch buildings.



Two hundred yards past the ranch buildings, the route follows a jeep track north off the main road.



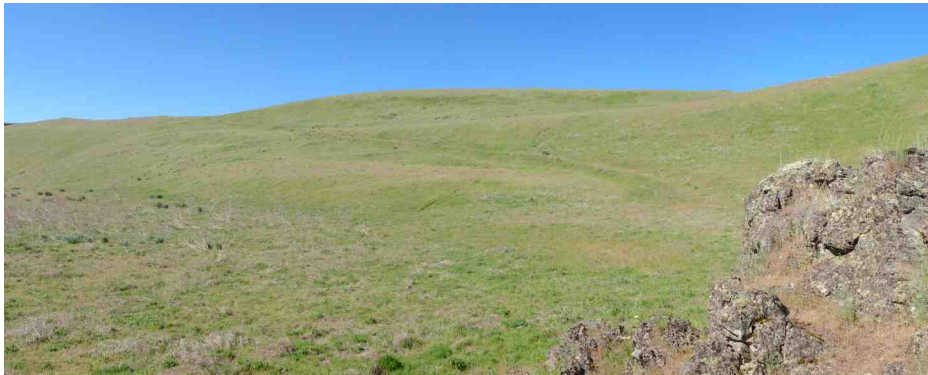
After a mile of winding through picturesque buttes on the uplands, the jeep track meets Rock Creek.



The jeep track continues north along the creek, with nice views back south of the coulee walls.



At 3.0 miles, one finds rock outcrops and shade trees — a good destination for an out-and-back hike.



To return via the upland loop, one follows the jeep track as it climbs across a grassy hillside to the west.



The upland return route features wildflowers, mima mounds and long views of the desert scabland terrain.



Nearing the ranch buildings, the upland return route rejoins the main road, through dramatic basalt buttes.